

# Professional HD IP Camera

## Quick Start Guide

### V 2.3

Please download CD information at [www.ipcam.xin](http://www.ipcam.xin).

Please read this manual carefully before using this product and keep it for future reference.

**This manual is applies to our professional series IP cameras such as:**

**Bullet HD IP cameras**

**Dome HD IP cameras**

**PTZ HD IP cameras**

**The product does not contain CD, please download the correct product CD information at [www.ipcam.xin](http://www.ipcam.xin) before operating the camera.**

**Recommend operating the IP camera according to the content below.**

## Content

<b>1. About camera</b>	<b>3</b>
<b>2. Connect camera</b>	<b>4</b>
<b>3. View via mobile phone</b>	<b>5</b>
<b>4. View via PC</b>	<b>6</b>
<b>5. Set WIFI</b>	<b>8</b>
<b>6. Set Micro SD card records</b>	<b>9</b>
<b>7. Reboot and restore factory setting</b>	<b>11</b>
<b>8. More info</b>	<b>12</b>

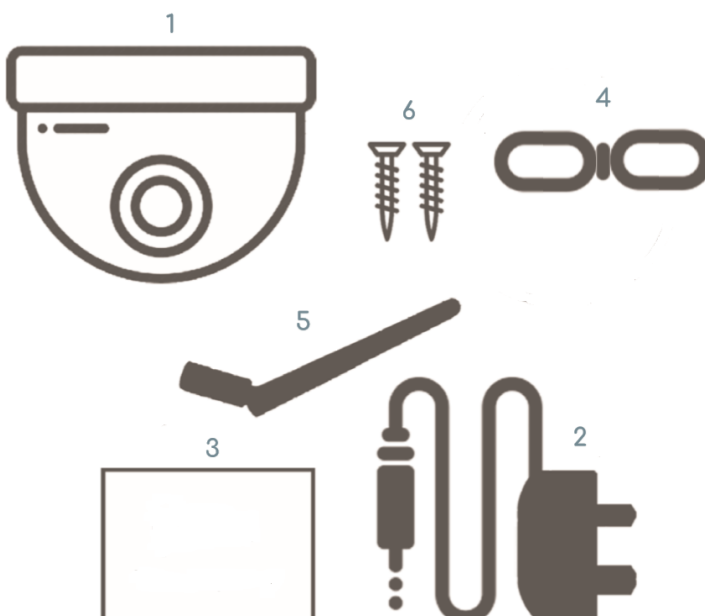
# 1. About camera

## 1.1 Product introduction.

This is a HD IP camera for monitoring. It connects to the Internet to send and receive data, you can use it to remotely view real-time images from your mobile phone, computer or other device anytime and anywhere, it can save surveillance videos in the Micro SD card, computer or other device, The camera also supports alarm functions such as sending alarm emails, alarming phone message push and other functions.

## 1.2 Product should contain:

- ① IP Camera
- ② Power adapter
- ③ User manual
- ④ Network cable
- ⑤ WIFI Antenna
- ⑥ Screws bag



## 1.3 Product interface.



## 2. Connect camera

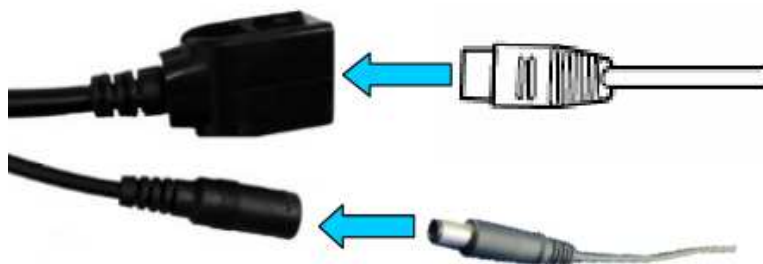
### 2.1 Connect network cable to router and plug in power adapter.



**The router must be able to connect to the Internet!**

Please use the standard power supply.

### 2.2 Connect network cable and power to the camera, it needs about a few minutes to self checking and then start working.



**Network indicator light (green): always flashing means network data transmission is normal.**

The camera will turn on AP mode when the camera is only connected to the power supply. you can connect the camera via the AP mode. For details, please find help documentation “How to use the AP mode of the camera” in the CD information.

## 3. View via mobile phone

3.1 Download “CamHi” or “CamHiPro” from Google Play Store / Apple App Store or scan the QR code below to get APP information.

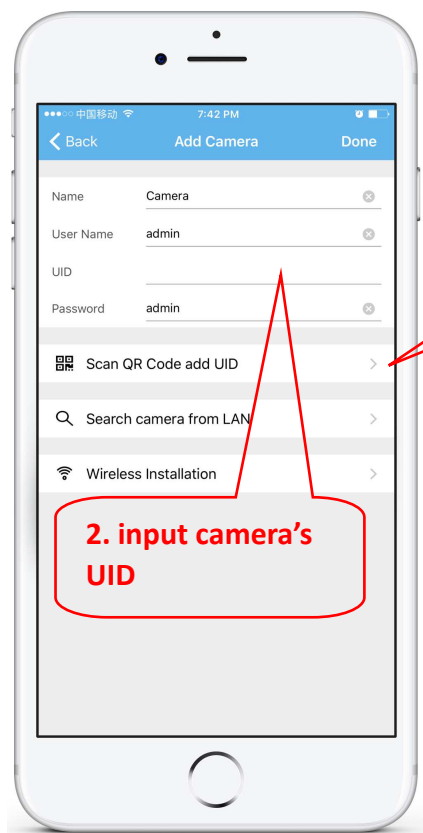
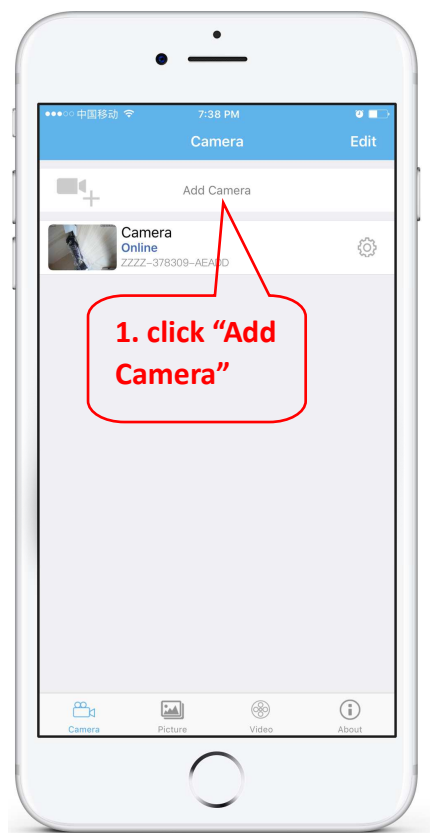


Android



IOS

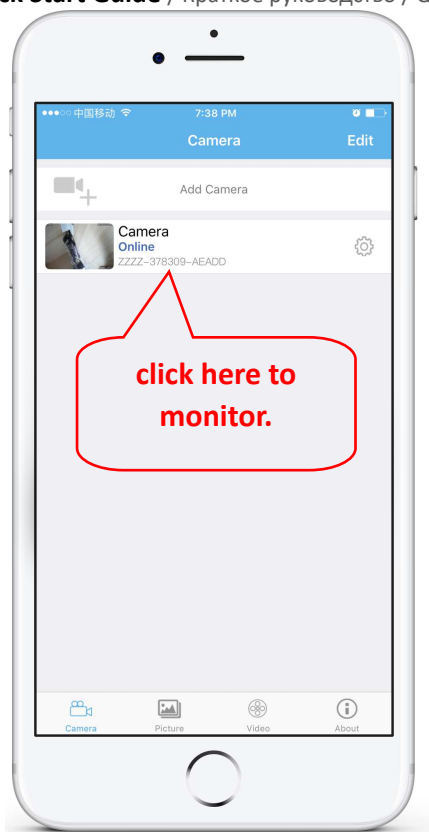
3.2 Run APP and Add Camera.



You can quickly enter the UID by scanning the QR code on the camera's label, as shown below



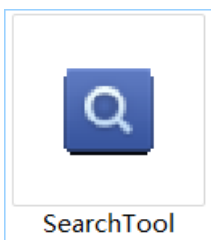
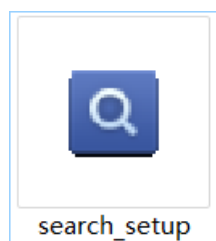
3.3 After adding the camera, click online camera to view real-time image.



Detailed instructions for CamHI are available in the CD information.

## 4. View via PC

4.1 Install the “Search tool” from the CD information, then run it to find the cameras.



Network: Qualcomm Atheros AR9485WB-EG Wireless Netw

NO	IP Address	Name	MAC Address	Version	port
0	192.168.1.122	IPCAM	00:E0:F8:04:31:DE	V7.1.0.2.1-20150817	

Please select the device list, and then click Next to modify

Back Next Cancel

1. Click "Refresh" to find the camera

2. double click camera information to run browser to access the camera

Click “Next” can modify network parameters of the camera.

Local 192.168.1.18    The software finds available network setting for the Ipcamera automatically. We suggest you just use it you want to modify it manually

DHCP

IP	192 . 168 . 1 . 19	Name	IPCAM
SubMask	255 . 255 . 255 . 0	User	admin
GateWav	192 . 168 . 1 . 1	Passwoi	*****
Port	80	<input type="button" value="Pwd Reset"/>	

IP	192.168.1.122	Name	IPCAM
SubMas	255.255.255.0	Port	80
GateWa	192.168.1.1		
MAC	00:E0:F8:04:31:DE		

Click Next to confirm the selected device, click Back to reselect the

Default user name:  
admin

Default password:  
admin

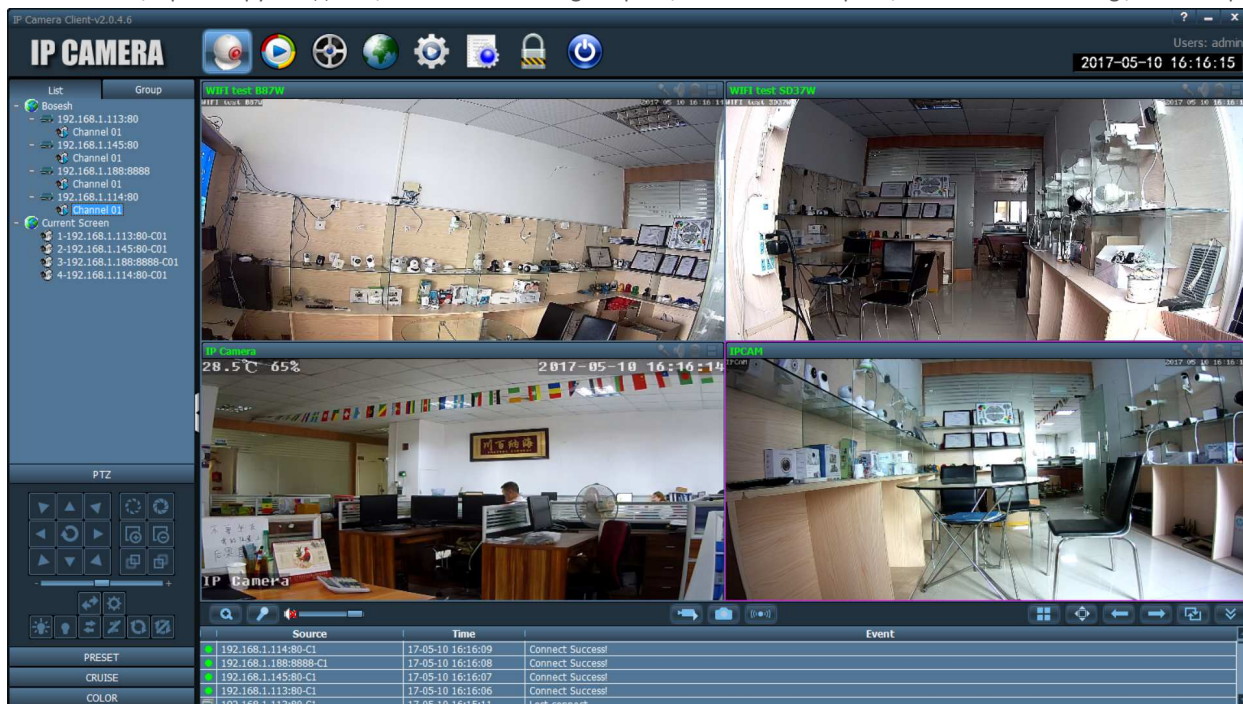
## 4.2 Access to the camera via browser on windows PC.



In browser you can view image and configure all parameters of camera.

**if you are not using IE browser some settings will be missing.**

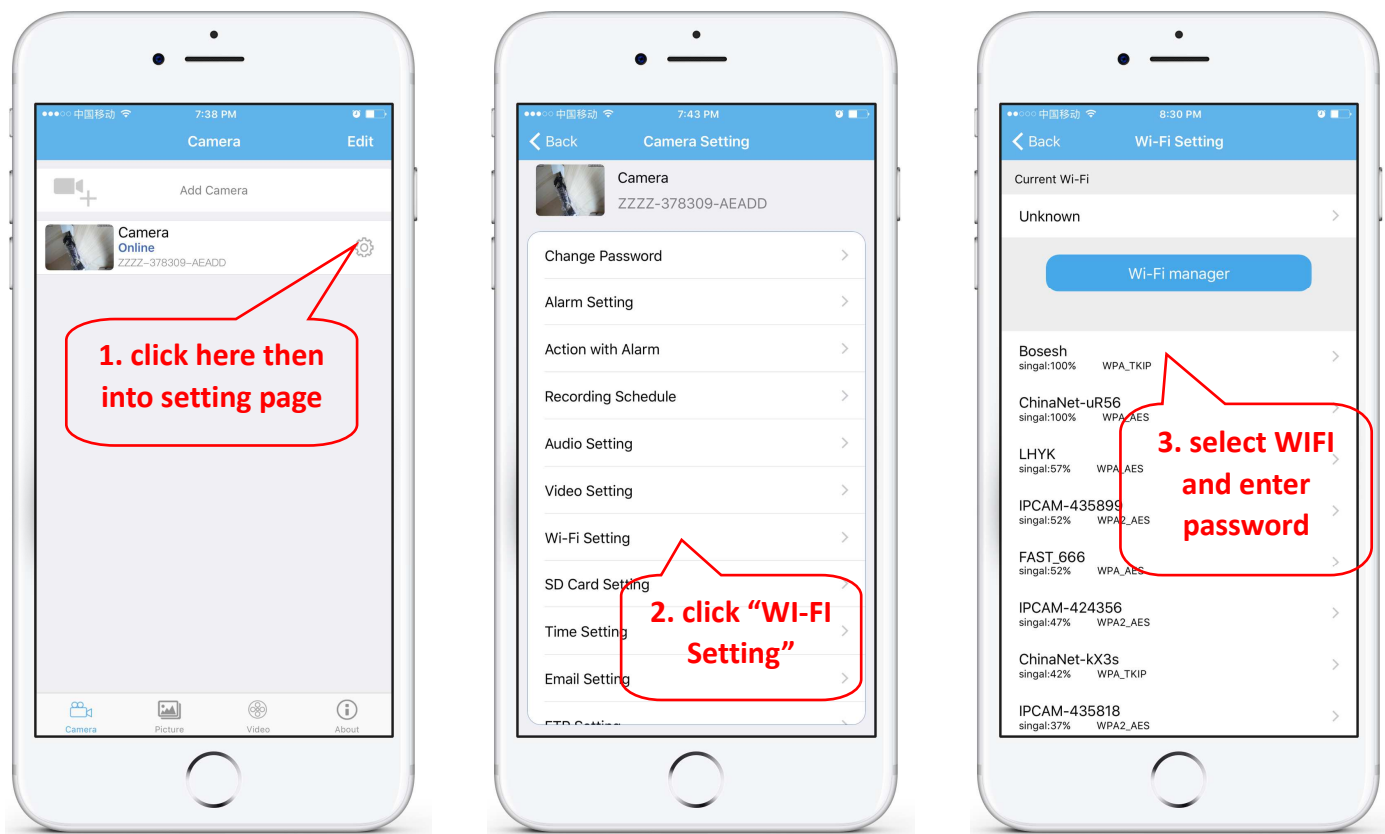
## 4.3 Connect and manage the multiple cameras via CMS on windows PC!



CMS installation packages and instructions are available in the CD information.

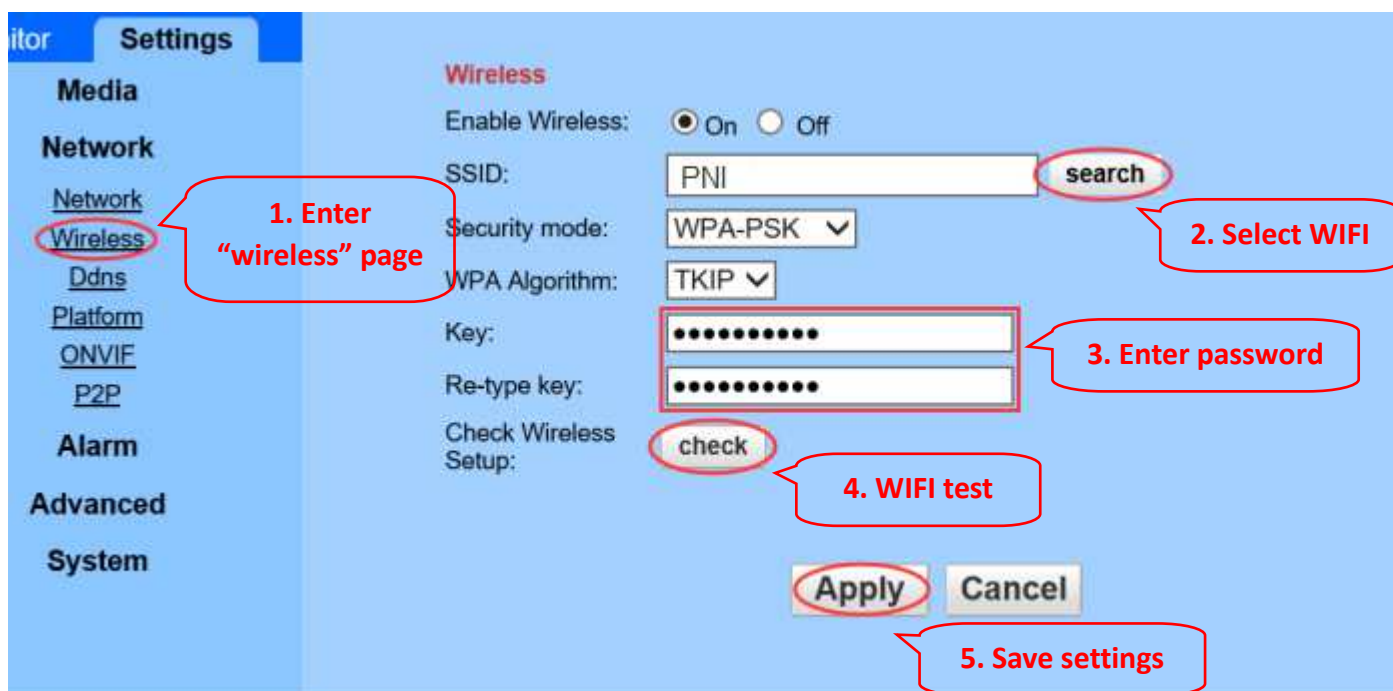
## 5. Set WIFI

### 5.1 Set WIFI on phone.





## 5.2 Set WIFI via browser on PC.

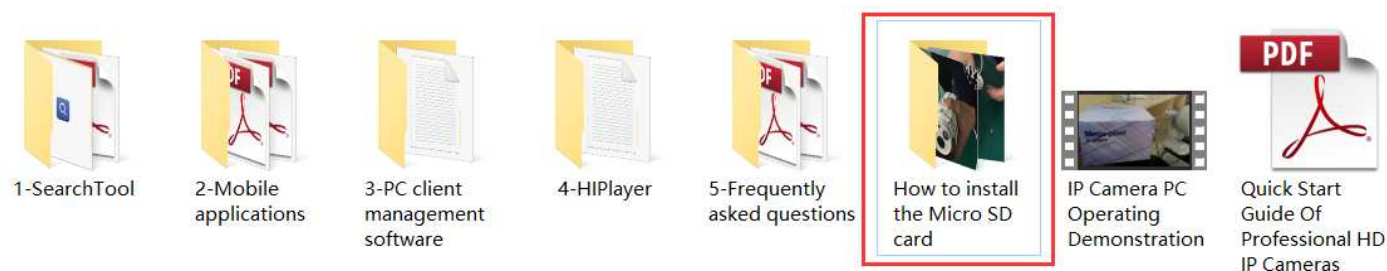


The WIFI connected to the camera must have a signal value greater than 50% and WIFI name must be English and cannot contain special characters.

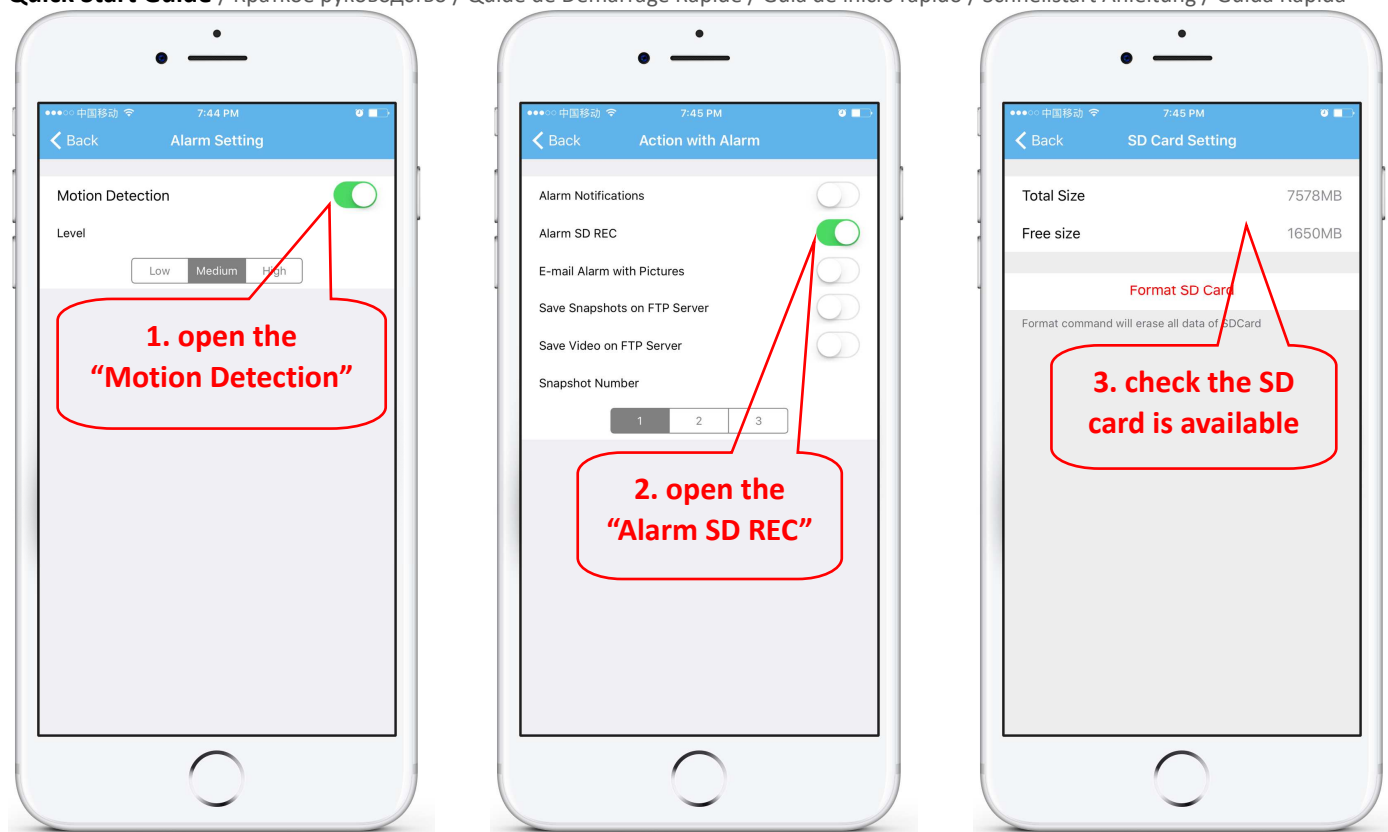
After the WIFI setting is completed, the camera will automatically switch to the WIFI connection when the network cable is unplugged.

## 6. Set Micro SD card record

6.1 Find the camera Micro SD card installation tutorials in the CD information, install the Micro SD card to the camera.



6.2 Set motion detection alarm recording on the phone.

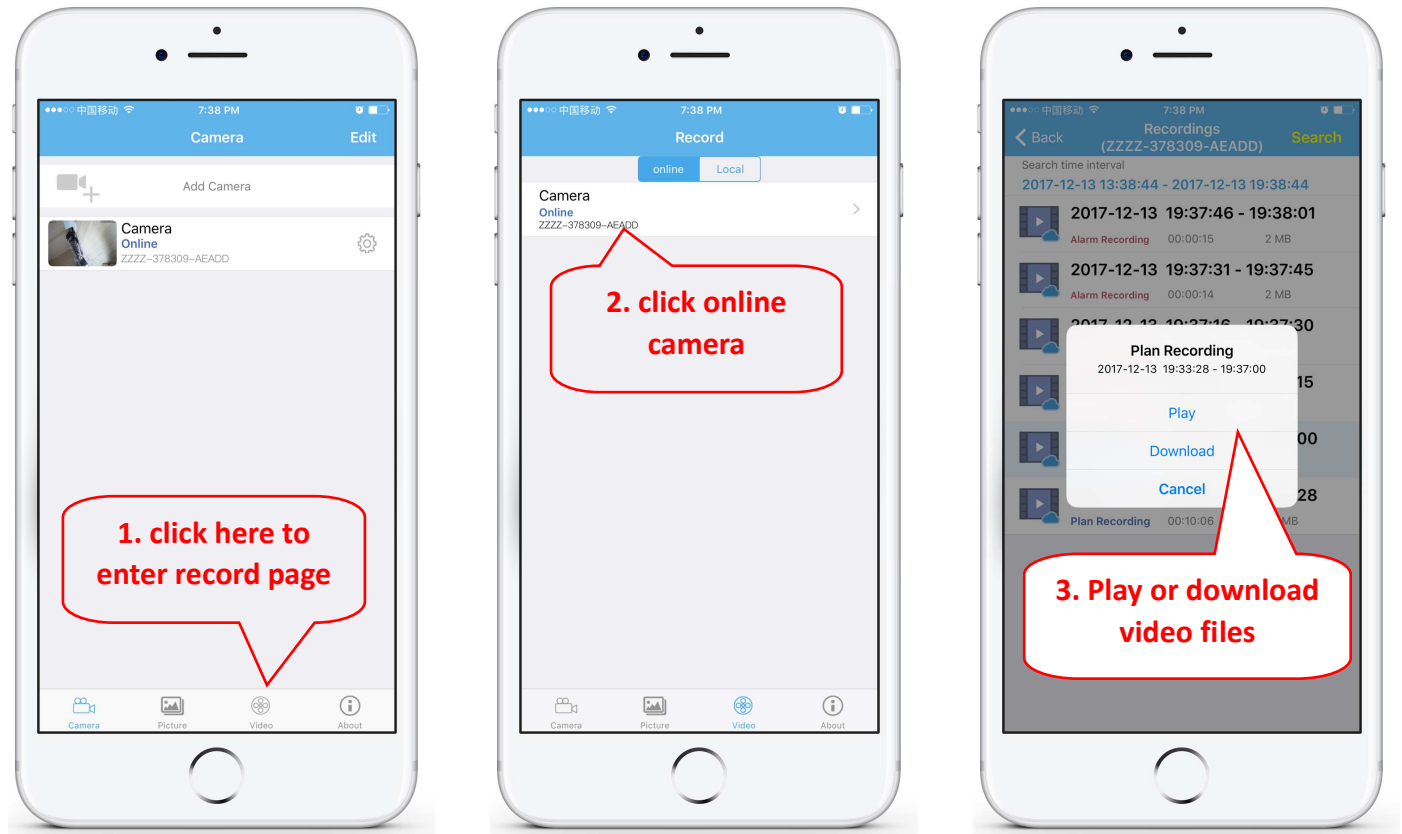


Motion detection alarm recording is recommended when the Micro SD card is small.

### 6.3 Set schedule recording on phone.



## 6.4 Playback record on phone.



These parameters can be set in more detail via IE browser on the PC!

## 7. Reboot and restore factory settings

### 7.1 Reconnect the power to restart the camera.



### 7.2 Press and hold the reset button for 15 seconds and the camera will restore to factory settings.



Also you can restart or reset the camera via mobile phone or PC.

## 8. More info

**This manual is to help customers to know and use the camera quickly, For detailed instructions and video tutorials please refer to the content of CD information at [www.ipcam.xin](http://www.ipcam.xin).**

**This manual may have descriptions and operations that do not match the product, If you have any questions or need technical support Please feel free to contact us or our dealers.**